

# Colombo Wetland Management Framework - Draft

2024





## Contents

1 - Introduction.....	3
2 - Wetland Management Framework.....	4
Level 1- National Wetland Steering Committee .....	4
Level 2 – Colombo Wetland Strategy Committee.....	4
Level 3 – Wetland Delivery Boards.....	4
Level 4 – Wetland Engagement Champions .....	6
3 - Framework development context and background.....	7
3.1 - Colombo’s urban wetlands.....	7
3.2 - Background.....	8
3.2.1 – National Wetland Policy and Strategy .....	8
3.2.2 – Colombo Wetland Management Strategy.....	8
3.2.3 – Additional engagement to inform the framework .....	9
4 – Wetland Management Principles.....	10
5 - Summary .....	11
Appendix I – Wetland Delivery Boards.....	12

## 1 - Introduction

The '**Increasing the resilience of biodiversity and livelihoods in Colombo's wetlands**' project, funded by the UK Government's Darwin Initiative, has been running since 2020 and is due to finish in 2024.

The project partners include:

- Biodiversity Secretariat, Ministry of Environment and Wildlife Resources
- Central Environment Authority (CEA), Ministry of Environment and Wildlife Resources
- Department of Wildlife Conservation, Ministry of Environment and Wildlife Resources
- Urban Development Authority (UDA), Ministry of Urban Development, Water Supply and Housing Facilities
- Sri Lanka Land Development Corporation (SLLDC), Ministry of Urban Development, Water Supply and Housing Facilities
- Field Ornithology Group of Sri Lanka (FOGSL)
- International Water Management Institute
- Cobra Collective

This project has investigated mechanisms for aligning community wetland practices and monitoring with government policies. At the catchment scale, community best practices of wetland management, have been identified and promoted to safeguard biodiversity, improve livelihoods and secure the well-being of 2.3 million people.

A key output of the project is to develop a Wetland Management Framework to support the wetland planning and management work of government agencies and communities across the Metro Colombo Wetland Complex (MCWC).

This report outlines a proposed Wetland Management Framework for MCWC (see section 2) building on existing legislation and policies of the key government agencies (see section 3) and the development of Wetland Management Principles (see section 4).

## 2 - Wetland Management Framework

The Wetland Management Framework includes four levels, listed below, and illustrated in Figure 1:

1. National Wetland Steering Committee
2. Colombo Wetland Strategy Committee
3. Wetland Delivery Boards
4. Wetland Engagement Champions

This framework will assist government agencies to deliver both the National Wetland Policy and Strategy and the Colombo Wetland Management Strategy.

### Level 1- National Wetland Steering Committee

This committee has already been established and has a remit for all wetlands across Sri Lanka. It is chaired by the Ministry of Environment and Wildlife Resources and includes the key agencies and stakeholders involved in wetland conservation and wise use.

### Level 2 – Colombo Wetland Strategy Committee

The geographical remit of this committee would be for all wetlands within the Metro Colombo area. The establishment of this committee would fulfil the recommendation within the Colombo Wetland Management Strategy and see the establishment of a Wetland Facilitating Committee for Metro Colombo mentioned in the National Wetland Policy and Strategy. The remit of this committee would be:

- To provide strategic overview for Colombo's wetlands and ensure integration into urban planning and other major initiatives on transport, health etc.
- To have an overview of agency projects occurring within each wetland area
- To ensure multi-agency collaboration in project initiation and delivery
- To access multiple funding mechanisms and look for income generation opportunities
- To allow representation of national and local government, civil society and communities from across Metro Colombo
- To coordinate Colombo specific wetland awareness raising and promotion
- To report to the National Wetland Steering Committee

The key aspect of this committee is that it is multi-agency and involves wider stakeholder and community representatives. This will lead to better coordination and cost savings on project delivery across Colombo's wetlands.

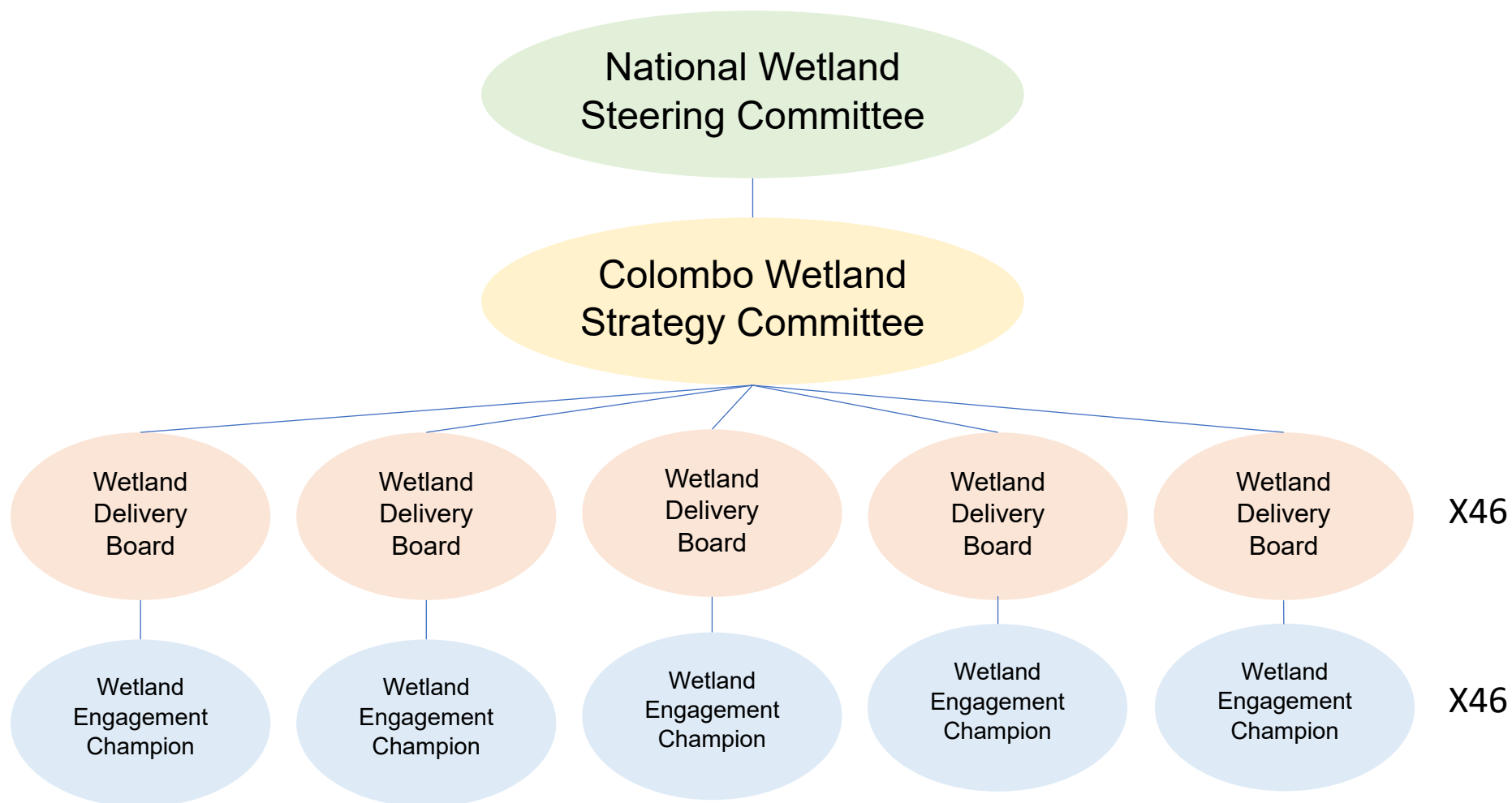
It is proposed that the Colombo Wetland Strategy Committee is chaired by SLLDC and that it meets monthly.

### Level 3 – Wetland Delivery Boards

Each wetland area would establish a Wetland Delivery Board either for the wetland itself or for specific projects to be delivered within the wetland. The remit of Wetland Delivery Boards would be:

- To include multi-national agency, local government, civil society and community representatives from the wetland area
- To be led by key government agency or private owner representative that has landowner responsibility for the wetland
- Ideally set up for each wetland area but if this is not possible, they should be established ahead of any project

Figure 1 - Colombo Wetland Management Framework



- To provide overview and guidance for wetland management plans and/or project delivery strategies
- To direct wider community engagement and consultation
- To report to the Colombo Wetland Strategy Committee

Appendix I provides the proposed structure of the Wetland Delivery Boards for each of the 46 wetland areas in Colombo including the lead agency, which agencies should be represented on the boards and community and stakeholder representation. Other board members can be included to represent other organisations and stakeholders as required.

#### Level 4 – Wetland Engagement Champions

The lead agency for each wetland area should identify one or more staff members or other agency staff members to act as champions for each wetland area. The remit of the Wetland Engagement Champions would be:

- To have, as part of their role(s), community, civil society and local government engagement and consultation
- To be responsible for continual engagement activities throughout management planning or project delivery using participatory techniques
- To build trust with all parts of the community and identify opportunities where communities can deliver management and monitoring activities
- To identify opportunities for income generation and livelihood support
- To report to the Wetland Delivery Board for the specific wetland

It is not envisaged that these are new roles within agencies but are an expansion of the existing activities of staff. Champions are recommended by the Colombo Wetland Management Strategy but have not been formally identified to date. However, within the Darwin Initiative project agency leads have championed community engagement and this has been extremely successful. A network of Wetland Engagement Champions will help coordinate activities with communities, stakeholders and local government leading to local project support, cost saving for government agencies and the identification of income generating opportunities for government agencies and livelihood support for communities.

### 3 - Framework development context and background

#### 3.1 - Colombo's urban wetlands

The MCWC covers a total area of 121.5 km<sup>2</sup> encompassing urban, peri urban and rural environments, of which 19 km<sup>2</sup> (15.6%) is designated as wetlands (Figure 3). The urban landscape can be described as one consisting of a wetland mosaic interspersed with urban areas and infrastructure. Within the MCWC, freshwater wetlands dominate and they account for more than 86% of the wetlands (Figure 3). Abandoned paddy lands are abundant. Many are being rehabilitated for a new wave of activities linked to urban agriculture, an emerging trend since the beginning of the COVID-19 pandemic. Open water wetlands, such as tanks, lakes, and canals, represent just over 20% of all the wetlands. Despite the complexity of the wetland classification, forty-six individual wetlands have been delineated within the complex. Wetland areas are undergoing rapid changes with urbanization and development, and this report sets out a framework to enhance wetland conservation and wise use across Metro Colombo.

Figure 2 - Wetlands of the Metro Colombo Wetland Complex. Their management approach is described in the Wetland Management Strategy Report (Signes 2016)

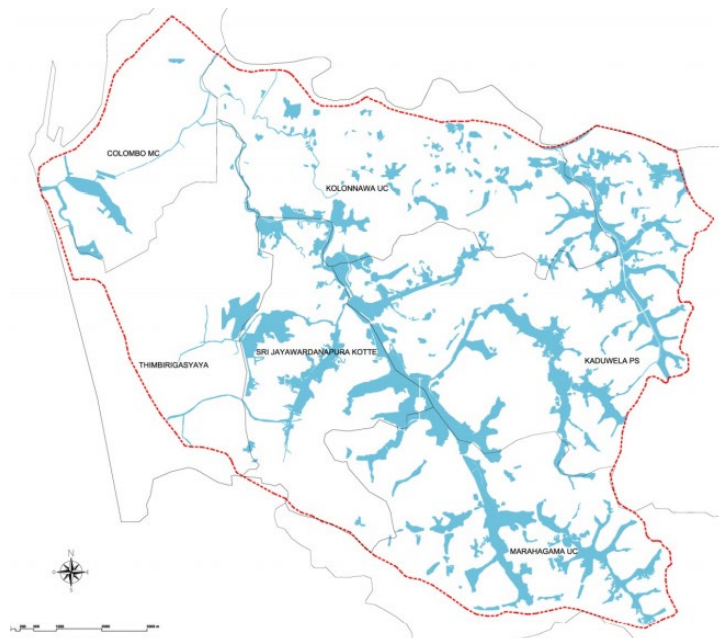


Figure 3 - The main wetland types identified within the Wetland Management Strategy Report (Signes 2016)

Habitat type	Upland	Woodland	Herb dominated	Open water	Woodland	Herb dominated		Open water	
Habitat feature		Mixed woodland	Tall herb	Flowing water	Annona woodland	Low herb		Tall herb	Standing water
Wetland type		Mixed woodland	Marginal vegetation	Floating vegetation	Annona woodland	Active paddy		Abandoned paddy	Floating vegetation Open water
Illustration									

## 3.2 - Background

For the development of the Colombo Wetland Management Framework a range of reference material and policies were reviewed.

Two key policies that have informed the development of the proposed Colombo Wetland Management Framework include:

- National Wetland Policy and Strategy – 2006
- Colombo Wetland Management Strategy – 2016

### 3.2.1 – National Wetland Policy and Strategy

Key aspects of the National Wetland Policy and Strategy include the following:

- Establishment of a National Wetland Steering Committee
- Establishment of Wetland Management Committees (WMC) for sensitive wetlands. The establishment of these committees are by the Central Environmental Authority.
- Preparation of basic Wetland Programmes for sensitive wetlands
- Preparation of Wetland Management Plans for sensitive wetlands
- Establishment of Wetland Facilitating Committees (WFCs) at Divisional, District and Provincial levels to support delivery of wetland programmes

In the context of Colombo, it should be noted that not all wetlands within the MCWC are identified as sensitive wetlands so WMCs have not been established for each wetland and other agency led projects or programmes within wetlands did not establish WMCs. WFCs specific for Colombo were also not established.

### 3.2.2 – Colombo Wetland Management Strategy

Within the Wetland Management Strategy there were five key recommendations:

- Recognise
- Prevent
- Restore
- Engage
- Govern

The Recognise recommendation included:

- Integrate wetland values into urban planning institutions
- Integrate wetland values into urban spatial planning

A review of progress in 2021 (Metro Colombo Urban Wetland Status Report) found that wetland values are recognised by key agencies and staff but wetland values have not been fully integrated into urban planning.

The Prevent recommendation included:

- Implement the obligations under the Convention on Wetlands
- Uphold existing legislation and policies

The 2021 review found that Colombo Wetland City Accreditation under the Convention on Wetlands had been achieved, wetland protection had been strengthened through the Cabinet Paper No CP/18/1817/803/028 that declared a moratorium on wetland destruction



and declared Colombo's wetlands as sanctuaries but the review also found that implementation of existing legislation was not fully effective.

The Restore recommendation included:

- Enhancing wetland ecosystem services for cross-sectoral benefits
- Develop a systematic benefits-based wetland restoration plan
- Restore wetlands as essential elements in climate change mitigation and adaptation programmes

The 2021 review found that wetland restoration champions in institutions had not been identified and a comprehensive wetland restoration plan had not been developed or implemented although individual projects had been undertaken.

The Engage recommendation included:

- Engaging with local communities and stakeholders
- Implementing a communications plan
- Promoting Colombo's wetlands

The 2021 review found that the creation of an appropriate governance structure that facilitates and encourages community and stakeholder engagement had not occurred within some agencies and within specific projects. However, the review found that communications and promotion of Colombo's wetlands had occurred by most agencies but not always in an integrated way.

The Govern recommendation included:

- Developing institutional capacities
- Resolve implications for existing regulations
- Implementing a monitoring and evaluation plan
- Reviewing, adapting and renewing

The 2021 review identified that a Colombo Wetland Management Strategy under the National Wetland Steering Committee had not been established to deliver the Wetland Management Strategy in coordinated way. The review noted that wetland demarcation was ongoing, harmonisation of legal instruments to protect wetlands had occurred through Cabinet Paper No CP/18/1817/803/028 but inter-agency monitoring of wetland status did not occur and regular reviews and updates of the Wetland Management Strategy had not occurred to date.

### 3.2.3 – Additional engagement to inform the framework

In addition to the review of reference material, policies and the 2021 Metro Colombo Urban Wetland Status Report, comprehensive engagement has taken place with government agencies, stakeholders and communities to inform the Colombo Wetland Management Framework. These have included the following:

- Stakeholder and community questionnaires – 2021 and 2022
- Project partnership meetings
- Stakeholder and community workshops
- Government agency one-to-one meetings
- Community participatory video production with 10 wetland communities

## 4 – Wetland Management Principles

The experience of the Darwin Initiative project in Colombo and the knowledge gained through extensive partner, stakeholder and community engagement has led to the formulation of a set of principles that have been developed to help guide successful wetland management within Colombo. These include:

- Multi-agency collaboration for successful wetland management and project delivery
- Each wetland area has a clear wetland organisational champion as the lead agency
- Organisational wetland policies should be aligned and include the wetland management framework
- Adaptive wetland management plans should consider the wetlands' ecological character and local community needs, set objectives and produce action plans
- Early and ongoing engagement and consultation with all stakeholders including local government, local communities and civil society groups
- Community engagement led by an 'Engagement Champion' that builds a relationship of trust with all parts of the community
- Use of participatory techniques in engagement so all voices are heard
- Ensuring engagement occurs at key project or planning stages
- Involving communities in management and monitoring activities

Implementing these principles will:

- Result in more effective project and programme delivery
- Reduce single agency costs
- Provide access to other funding sources
- Improve community relations and support of projects
- Raise awareness of the importance of wetlands and their value to people and the environment
- Ultimately lead to better protection and wise use of wetlands within Colombo

## 5 - Summary

The Colombo Wetland Management Framework has been developed to help agencies deliver both the National Wetland Policy and Strategy and the Colombo Wetland Management Strategy.

Implementing the framework and following the wetland management principles will result in more effective wetland project and programme delivery in Colombo, reduce single agency costs, provide access to other funding sources, improve community relations and support of projects, raise awareness of the importance of wetlands and their value to people and the environment, and lead to better protection and wise use of wetlands within Colombo.

## Appendix I – Wetland Delivery Boards

Number	Area Ha	Wetland name	Local Authority	Land ownership		Wetland Delivery Board Lead	Wetland Delivery Board Representatives										Wetland Engagement Champion within the following organisation
				Government	Private		Local community representative	Local community representative	Dept Wildlife Conservation	CEA	SLDLC	UDA	Irrigation dept	Non-governmental organisation representatives			
MCW01A	134.55	Kottawa Paddy fields (Depanama)	Maharagama UC		Paddy	Agrarian Department	Maharagama UC	Local community representative	Local community representative	Dept Wildlife Conservation	CEA	SLDLC	UDA		Irrigation dept	Non-governmental organisation representatives	Agrarian Department
MCW01B	69.9	Polwattekele (Polwatta Rd)	Maharagama UC		Paddy	Agrarian Department	Maharagama UC	Local community representative	Local community representative	Dept Wildlife Conservation	CEA	SLDLC	UDA		Irrigation dept	Non-governmental organisation representatives	Agrarian Department
MCW01C	46.08	Pathiragodaela (Dambahena)	Maharagama UC		Paddy	Agrarian Department	Maharagama UC	Local community representative	Local community representative	Dept Wildlife Conservation	CEA	SLDLC	UDA		Irrigation dept	Non-governmental organisation representatives	Agrarian Department
MCW01D	95.23	Kibulawela	Maharagama UC		Paddy	SLDLC	Maharagama UC	Local community representative	Local community representative	Dept Wildlife Conservation	CEA		UDA		Irrigation dept	Non-governmental organisation representatives	SLDLC
MCW02A	457.71	Talangama South (Talangama Lake)	Kaduwela PS	CEA - Lake only	paddy fields private	CEA	Kaduwela PS	Local community representative	Local community representative	Dept Wildlife Conservation	CEA	SLDLC		Agrarian dept	Irrigation dept	Non-governmental organisation representatives	CEA
MCW02B	134.25	Talangama North_Akuregoda	Kaduwela PS	SLDLC		SLDLC	Kaduwela PS	Local community representative	Local community representative	Dept Wildlife Conservation	CEA		UDA			Non-governmental organisation representatives	SLDLC
MCW02C	96.05	Evarihena (Evarihena Tank; Madiwela East canal)	Kaduwela PS	SLDLC Tank	paddy	SLDLC	Kaduwela PS	Local community representative	Local community representative	Dept Wildlife Conservation	CEA		UDA	Agrarian dept	Irrigation dept	Non-governmental organisation representatives	SLDLC
MCW03	103.91	Parliament Lake South (Diyawanna Oya; Thalawatugoda marsh)	Kaduwela PS Maharagama UC	SLDLC		SLDLC	Kaduwela PS Maharagama UC	Local community representative	Local community representative	Dept Wildlife Conservation	CEA		UDA			Non-governmental organisation representatives	SLDLC
MCW04	73.84	Waters Edge (Diyawanna Oya)	Kaduwela PS	UDA		UDA	Kaduwela PS	Local community representative	Local community representative	Dept Wildlife Conservation	CEA	SLDLC				Non-governmental organisation representatives	UDA
MCW05	167.49	Parliament Lake North (Diyawanna Oya; Beddagana marsh)	Kaduwela PS Sri Jayawardanapura Kotte Maharagama UC	UDA		UDA	Kaduwela PS Sri Jayawardanapura Kotte Maharagama UC	Local community representative	Local community representative	Dept Wildlife Conservation	CEA	SLDLC				Non-governmental organisation representatives	UDA
MCW06	45.84	Kolonnawa East _Gothatuwa	COLOMBO MC	SLDLC		SLDLC	COLOMBO MC	Local community representative	Local community representative	Dept Wildlife Conservation	CEA		UDA			Non-governmental organisation representatives	SLDLC
MCW07	66.05	Kolonnawa South_Madinnagoda	Kolonnawa UC Kaduwela PS Sri Jayawardanapura Kotte	SLDLC		SLDLC	Kolonnawa UC Kaduwela PS Sri Jayawardanapura Kotte	Local community representative	Local community representative	Dept Wildlife Conservation	CEA		UDA			Non-governmental organisation representatives	SLDLC
MCW08	30.14	Diyatha Uyana	Kaduwela PS Sri Jayawardanapura Kotte	SLDLC		SLDLC	Kaduwela PS Sri Jayawardanapura Kotte	Local community representative	Local community representative	Dept Wildlife Conservation	CEA		UDA			Non-governmental organisation representatives	SLDLC
MCW09A	36.06	Kotte Marsh North	Sri Jayawardanapura Kotte	SLDLC		SLDLC	Sri Jayawardanapura Kotte	Local community representative	Local community representative	Dept Wildlife Conservation	CEA		UDA			Non-governmental organisation representatives	SLDLC
MCW09B	16.73	Kotte Marsh Nawala	Sri Jayawardanapura Kotte	SLDLC		SLDLC	Sri Jayawardanapura Kotte	Local community representative	Local community representative	Dept Wildlife Conservation	CEA		UDA			Non-governmental organisation representatives	SLDLC
MCW09C	21.83	Kotte Marsh Pagoda	Sri Jayawardanapura Kotte	UDA foot path Marsh area SLLDC		UDA	Sri Jayawardanapura Kotte	Local community representative	Local community representative	Dept Wildlife Conservation	CEA	SLDLC				Non-governmental organisation representatives	UDA
MCW09D	4.53	Kirulapana Canal	Sri Jayawardanapura Kotte Thimbirigasyaya	UDA and SLLDC		UDA	Sri Jayawardanapura Kotte Thimbirigasyaya	Local community representative	Local community representative	Dept Wildlife Conservation	CEA	SLDLC				Non-governmental organisation representatives	UDA



Number	Area Ha	Wetland name	Local Authority	Land ownership		Wetland Delivery Board Lead	Wetland Delivery Board Representatives								Wetland Engagement Champion within the following organisation		
				Government	Private												
MCW09E	12.71	Kotte Marsh Urban Park (Nugegoda)	Sri Jayawardanapura Kotte	SLDC		SLDC	Sri Jayawardanapura Kotte	Local community representative	Local community representative	Dept Wildlife Conservation	CEA		UDA			Non-governmental organisation representatives	SLDC
MCW10	11.57	Welikada Canal (Heen Ela-Kotte marsh connexion)	Sri Jayawardanapura Kotte	SLDC		SLDC	Sri Jayawardanapura Kotte	Local community representative	Local community representative	Dept Wildlife Conservation	CEA		UDA			Non-governmental organisation representatives	SLDC
MCW11	34.21	Kolonnawa West Salamulla	Kolonnawa UC	SLDC		SLDC	Kolonnawa UC	Local community representative	Local community representative	Dept Wildlife Conservation	CEA		UDA			Non-governmental organisation representatives	SLDC
MCW12	20.89	Kolonnawa West_Yakbedda	Sri Jayawardanapura Kotte	SLDC		SLDC	Sri Jayawardanapura Kotte	Local community representative	Local community representative	Dept Wildlife Conservation	CEA		UDA			Non-governmental organisation representatives	SLDC
MCW13	2.58	Mahawatta canal	Sri Jayawardanapura Kotte Thimbirigasyaya	SLDC		SLDC	Sri Jayawardanapura Kotte Thimbirigasyaya	Local community representative	Local community representative	Dept Wildlife Conservation	CEA		UDA			Non-governmental organisation representatives	SLDC
MCW14	1.7	Kinda Canal_SLLRDC	Sri Jayawardanapura Kotte	SLDC		SLDC	Sri Jayawardanapura Kotte	Local community representative	Local community representative	Dept Wildlife Conservation	CEA		UDA			Non-governmental organisation representatives	SLDC
MCW15	6.67	Kinda Canal__Lake drive	Thimbirigasyaya	SLDC		SLDC	Thimbirigasyaya	Local community representative	Local community representative	Dept Wildlife Conservation	CEA		UDA			Non-governmental organisation representatives	SLDC
MCW17	31.36	Heen Ela marsh	Sri Jayawardanapura Kotte	SLDC		SLDC	Sri Jayawardanapura Kotte	Local community representative	Local community representative	Dept Wildlife Conservation	CEA		UDA			Non-governmental organisation representatives	SLDC
MCW18	1.84	Heen Ela (Canal)	Thimbirigasyaya	SLDC		SLDC	Thimbirigasyaya	Local community representative	Local community representative	Dept Wildlife Conservation	CEA		UDA			Non-governmental organisation representatives	SLDC
MCW19A	27.37	Narahenpita hospital park (Heen ela)	Thimbirigasyaya	SLDC		SLDC	Thimbirigasyaya	Local community representative	Local community representative	Dept Wildlife Conservation	CEA		UDA			Non-governmental organisation representatives	SLDC
MCW19B	2.38	Narahenpita_Heen Ela_Circular Rd	Sri Jayawardanapura Kotte Thimbirigasyaya	SLDC		SLDC	Sri Jayawardanapura Kotte Thimbirigasyaya	Local community representative	Local community representative	Dept Wildlife Conservation	CEA		UDA			Non-governmental organisation representatives	SLDC
MCW20	1.16	Narahenpita south (kiri ela)	Thimbirigasyaya	SLDC		SLDC	Thimbirigasyaya	Local community representative	Local community representative	Dept Wildlife Conservation	CEA		UDA			Non-governmental organisation representatives	SLDC
MCW21	2.63	Kirulapana canal (Kirilapone)	Thimbirigasyaya	SLDC		SLDC	Thimbirigasyaya	Local community representative	Local community representative	Dept Wildlife Conservation	CEA		UDA			Non-governmental organisation representatives	SLDC
MCW22	5.06	Dehiwala Canal	Thimbirigasyaya	SLDC		SLDC	Thimbirigasyaya	Local community representative	Local community representative	Dept Wildlife Conservation	CEA		UDA			Non-governmental organisation representatives	SLDC
MCW24	1.92	Kirulapana Canal	Thimbirigasyaya	SLDC		SLDC	Thimbirigasyaya	Local community representative	Local community representative	Dept Wildlife Conservation	CEA		UDA			Non-governmental organisation representatives	SLDC
MCW25	9.37	Heen Ela Canal_Narahenpita (near RMV)	Thimbirigasyaya	SLDC		SLDC	Thimbirigasyaya	Local community representative	Local community representative	Dept Wildlife Conservation	CEA		UDA			Non-governmental organisation representatives	SLDC
MCW26	9.82	Heen Ela Canal_Colombo 7 (near Russian Embassy)	Thimbirigasyaya	SLDC		SLDC	Thimbirigasyaya	Local community representative	Local community representative	Dept Wildlife Conservation	CEA		UDA			Non-governmental organisation representatives	SLDC
MCW27A	6.7	Serpentine (railway station punchi kochchiya near the oval)	Thimbirigasyaya	SLDC		SLDC	Thimbirigasyaya	Local community representative	Local community representative	Dept Wildlife Conservation	CEA		UDA			Non-governmental organisation representatives	SLDC
MCW27B	7.33	Dematagoda Canal	Thimbirigasyaya	SLDC		SLDC	Thimbirigasyaya	Local community representative	Local community representative	Dept Wildlife Conservation	CEA		UDA			Non-governmental organisation representatives	SLDC

Number	Area Ha	Wetland name	Local Authority	Land ownership		Wetland Delivery Board Lead	Wetland Delivery Board Representatives									Wetland Engagement Champion within the following organisation	
				Government	Private												
MCW28	8.07	Dematagoda Canal	Thimbrigasyaya Kolonnawa UC	SLDC		SLDC	Thimbrigasyaya Kolonnawa UC	Local community representative	Local community representative	Dept Wildlife Conservation	CEA		UDA			Non-governmental organisation representatives	SLDC
MCW29A	3.58	Saint Sebastian Canal	Thimbrigasyaya	SLDC		SLDC	Thimbrigasyaya	Local community representative	Local community representative	Dept Wildlife Conservation	CEA		UDA			Non-governmental organisation representatives	SLDC
MCW29B	1.95	Saint Sebastian Canal	COLOMBO MC	SLDC		SLDC	COLOMBO MC	Local community representative	Local community representative	Dept Wildlife Conservation	CEA		UDA			Non-governmental organisation representatives	SLDC
MCW30	3.84	Saint Sebastian North Canal	COLOMBO MC	SLDC		SLDC	COLOMBO MC	Local community representative	Local community representative	Dept Wildlife Conservation	CEA		UDA			Non-governmental organisation representatives	SLDC
MCW31	2.43	Kittampahuwa Ela (Canal)	Kolonnawa UC	SLDC		SLDC	Kolonnawa UC	Local community representative	Local community representative	Dept Wildlife Conservation	CEA		UDA			Non-governmental organisation representatives	SLDC
MCW32	1.9	Saint Sebastian North Canal	COLOMBO MC Kolonnawa UC	SLDC		SLDC	COLOMBO MC Kolonnawa UC	Local community representative	Local community representative	Dept Wildlife Conservation	CEA		UDA			Non-governmental organisation representatives	SLDC
MCW33	7.27	Main Canal Area(Madampitiya)	COLOMBO MC	SLDC		SLDC	COLOMBO MC	Local community representative	Local community representative	Dept Wildlife Conservation	CEA		UDA			Non-governmental organisation representatives	SLDC
MCW34	72.72	Beira Lake (South, West,Floating Market)	COLOMBO MC	SLDC and Ports Authority		SLDC	COLOMBO MC	Local community representative	Local community representative	Dept Wildlife Conservation	CEA				Ports Authority	Non-governmental organisation representatives	SLDC
MCW35	267.91	Kelany River South Bank Area: Kolonnawa drainage system, Wellampitiya pond;Kotikawata marsh; Ambathale marsh, Mulleriyawma Tank	Kolonnawa UC	Irrigation and local authority		Irrigation Dept	Kolonnawa UC	Local community representative	Local community representative	Dept Wildlife Conservation	CEA	SLDC	UDA			Non-governmental organisation representatives	Irrigation Dept
MCW36	266.59	Malabe and Mulleriyawa marshes , Madiwella East Diversion Canal	Kolonnawa UC Kaduwela PS	SLDC	Some private	SLDC	Kolonnawa UC Kaduwela PS	Local community representative	Local community representative	Dept Wildlife Conservation	CEA		UDA			Non-governmental organisation representatives	SLDC